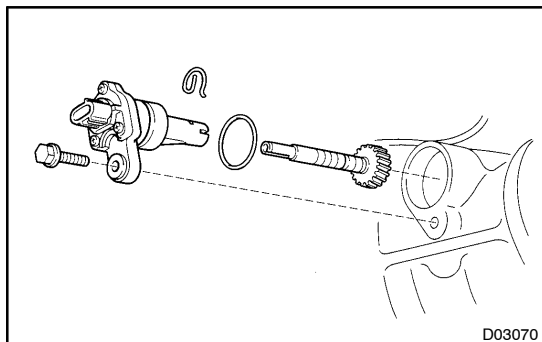


VEHICLE SPEED SENSOR ON-VEHICLE REPAIR

AT086-01

1. **DISCONNECT NO.1 VEHICLE SPEED SENSOR CONNECTOR**



2. **REMOVE NO.1 VEHICLE SPEED SENSOR**

Remove the bolt and the No.1 vehicle speed sensor.

3. **DISASSEMBLE NO.1 VEHICLE SPEED SENSOR**

- (a) Remove the O-ring from the speedometer driven gear assembly.
- (b) Remove the clip and speedometer driven gear from the speedometer driven gear sleeve.

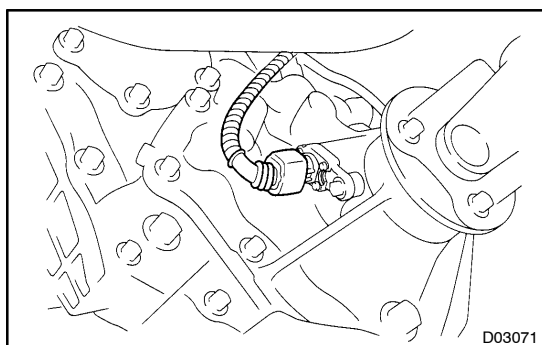
4. **ASSEMBLE NO.1 VEHICLE SPEED SENSOR**

- (a) Install the speedometer driven gear and clip to the speedometer driven gear sleeve.
- (b) Coat a new O-ring with ATF.
- (c) Install the O-ring to the speedometer driven gear assembly.

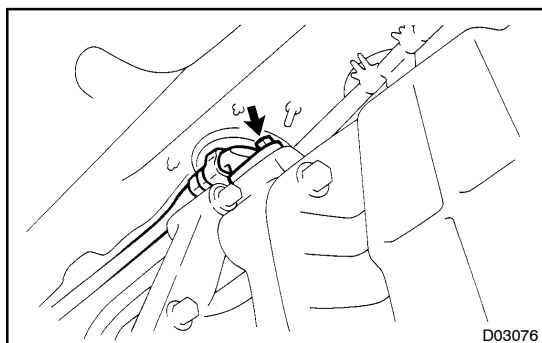
5. **INSTALL NO.1 VEHICLE SPEED SENSOR**

Install the No.1 vehicle speed sensor with the bolt.

Torque: 16 N·m (160 kgf·cm, 12 ft·lbf)



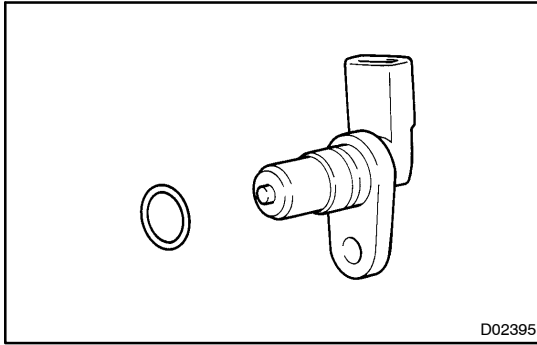
6. **CONNECT NO.1 VEHICLE SPEED SENSOR CONNECTOR**



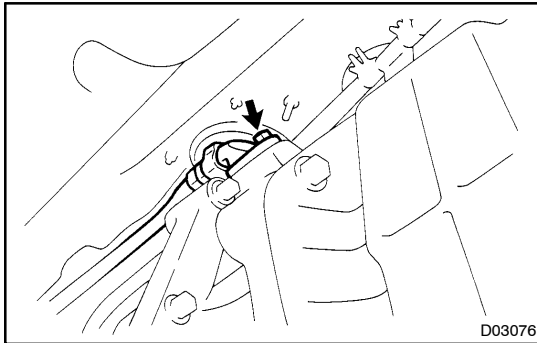
7. **DISCONNECT NO.2 VEHICLE SPEED SENSOR CONNECTOR**

8. **REMOVE NO.2 VEHICLE SPEED SENSOR**

- (a) Remove the bolt and No.2 vehicle speed sensor.



- (b) Remove the O-ring from the No.2 vehicle speed sensor.
- 9. INSTALL NO.2 VEHICLE SPEED SENSOR**
- (a) Coat a new O-ring with ATF and install it to the No.2 vehicle speed sensor.



- (b) Install the No.2 vehicle speed sensor with the bolt.
- Torque: 5.4 N·m (55 kgf·cm, 48 in.·lbf)**
- 10. CONNECT NO.2 VEHICLE SPEED SENSOR CONNECTOR**